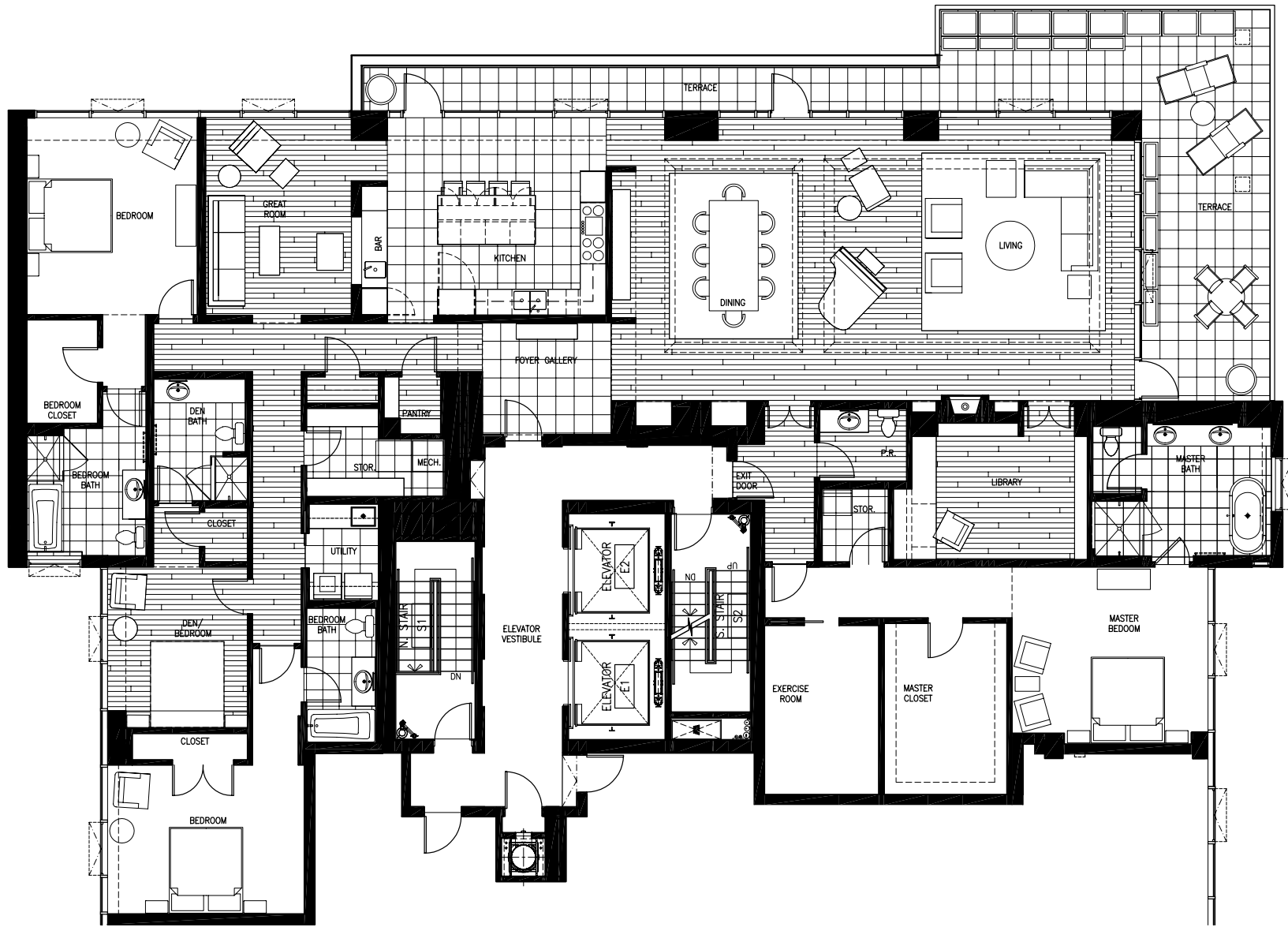
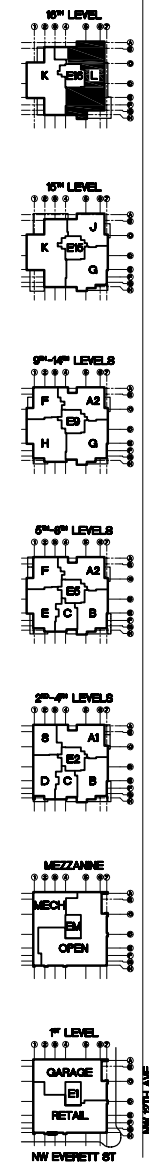


CAD FILE: P:\2020\5000\NW 12th & Everett\100 Drawings\Arch\CD\Marketing\MARKETING DWGS\UWP\Fin-L-04.dwg
 Floor plans, renderings, photos, views, and ceiling heights are approximate. Information has been obtained from sources deemed reliable but it is not guaranteed. Buyers shall only rely on information contained within the Unit Sales Agreement. Price quoted is for residential suites completed to builder specifications. Estimated HOA fees include water, sewer, garbage, recycling, interior and exterior maintenance, insurance, concierge, management fees and capital reserves. Price and square footage are subject to change without notice.



L FINISH FLOOR PLAN

1/4"=1'-0"



THE CASEY
 NW 12TH & EVERETT
 PORTLAND, OR 97209

GERDING/EDLEN
 DEVELOPMENT
 COMPANY, LLC

REVISIONS
 DATE
 January 31, 2007

PROJECT NUMBER
20045000

SHEET TITLE
 16TH LEVEL PLAN
 3 BR, 1 DEN, BR
 4.5 BA PENTHOUSE
 4,500 SF
 SCALE
 1/8"=1'-0" @ 11x17
 1/4"=1'-0" @ 22x34

NW EVERETT ST

*** GBD ARCHITECTS incorporated

UNIT FLOOR PLAN