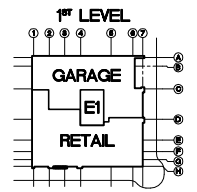
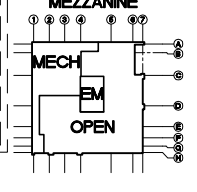
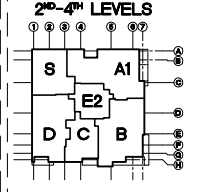
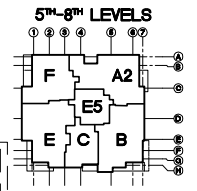
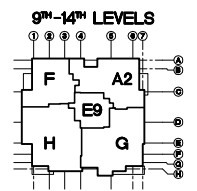
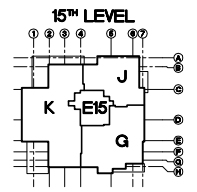
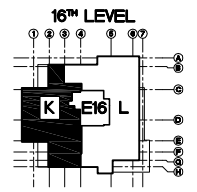
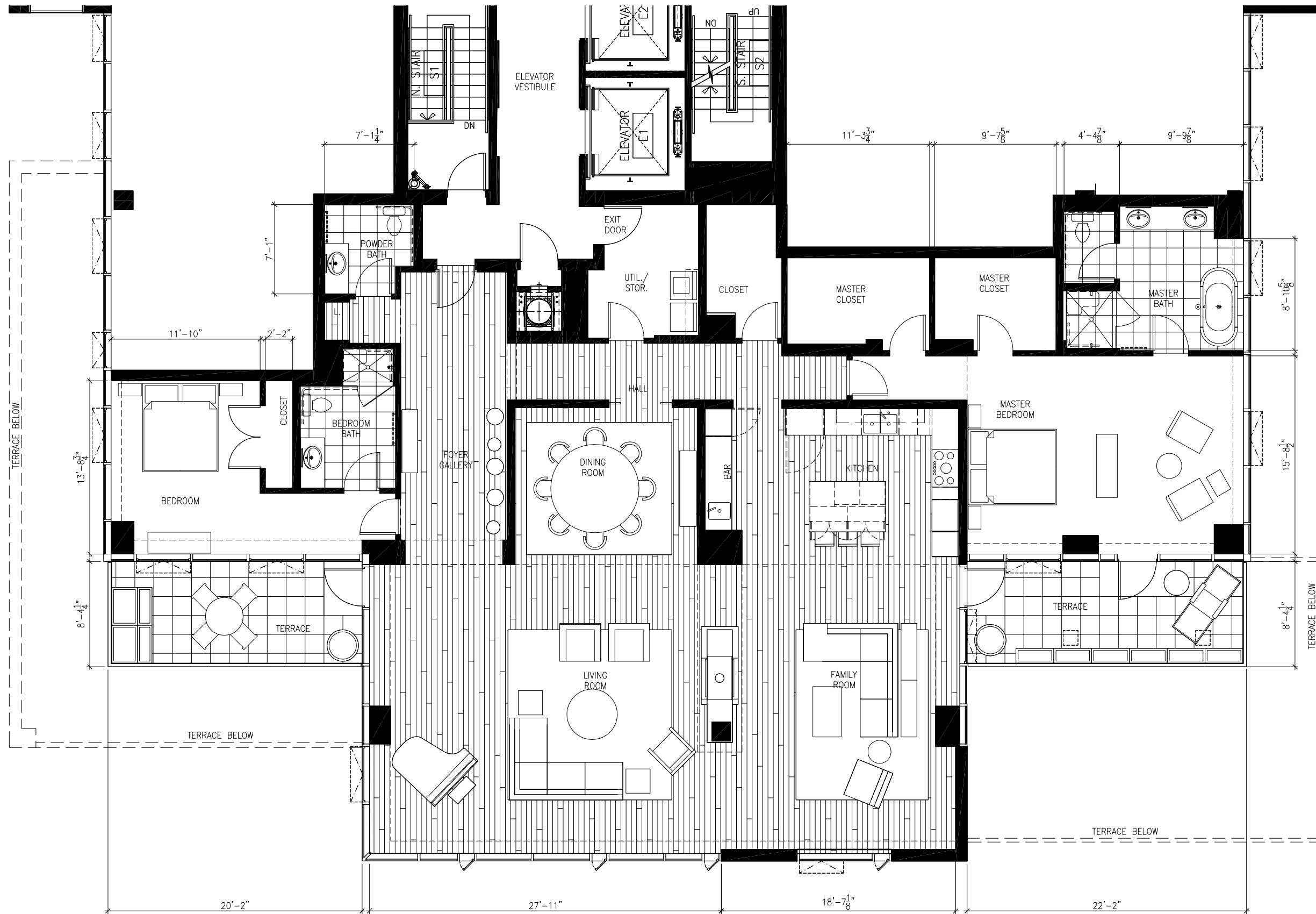


CAD FILE: P:\2004\3000 NW 12th & Everett\100 Drawings\Arch\CD\Marketing\MARKETING DWGS\UnitPlan-K16.dwg
Aug 09, 2007 - 3:54pm

Floor plans, renderings, photos, views, and ceiling heights are approximate. Information has been obtained from sources deemed reliable but it is not guaranteed. Buyers shall rely on information contained within the Unit Sales Agreement. Price quoted is for residential suites completed to builder specifications. Estimated HOA fees include water, sewer, garbage, recycling, interior and exterior maintenance, insurance, concierge, management fees and capital reserves. Price and square footage are subject to change without notice.



K 16 FLOOR FINISH PLAN

1/4"=1'-0"



THE CASEY

NW 12TH & EVERETT
PORTLAND, OR 97209

GERDING/EDLEN
DEVELOPMENT
COMPANY, LLC

REVISIONS

DATE
AUGUST 9, 2007

PROJECT NUMBER
20045000

SHEET TITLE
16TH LEVEL PLAN
2 BR 2.5 BA PENTHOUSE
3,271 SF

SCALE
1/8"=1'-0" @ 11x17
1/4"=1'-0" @ 22x34

K16

UNIT FLOOR PLAN