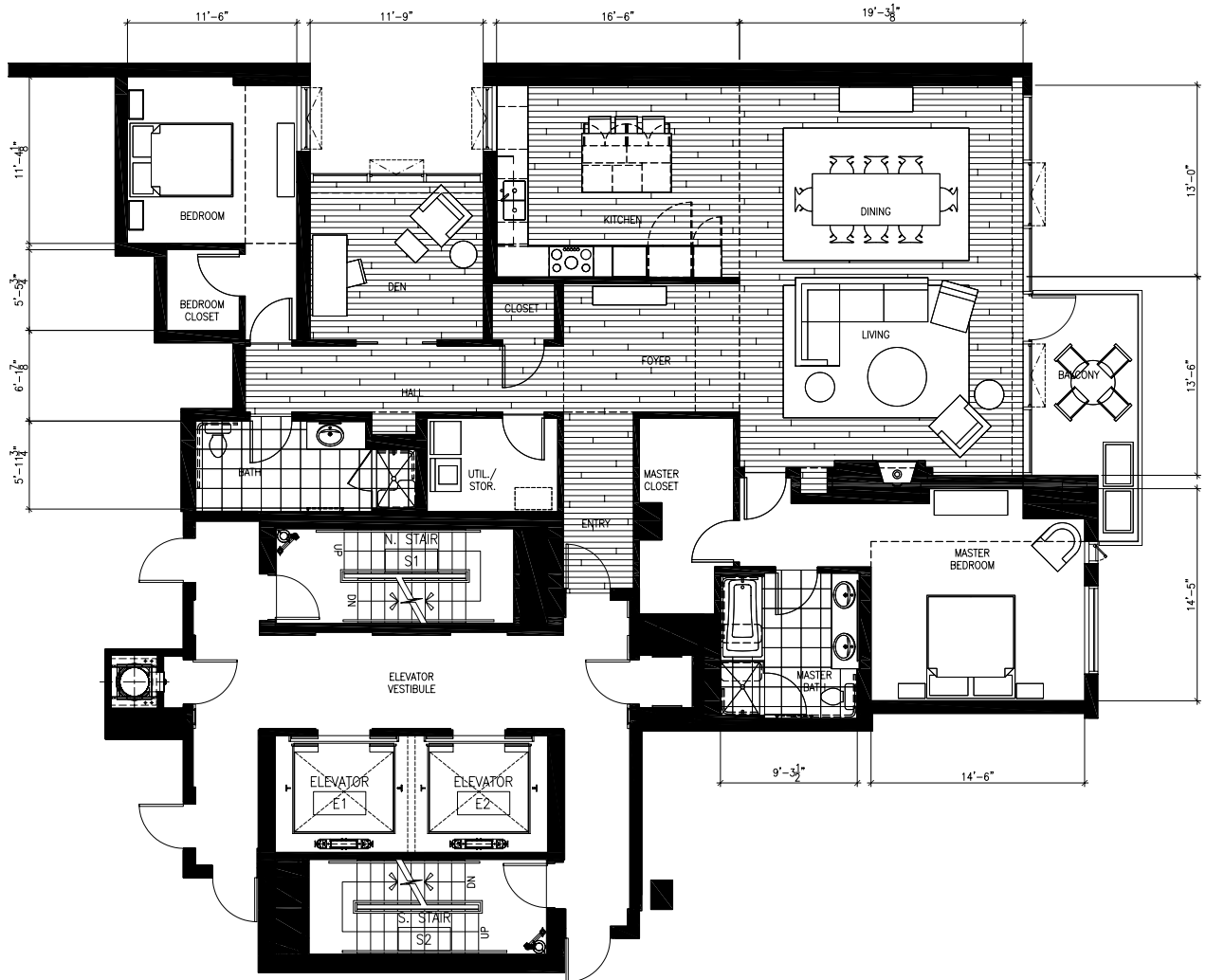
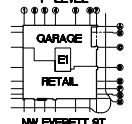
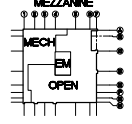
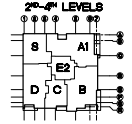
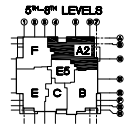
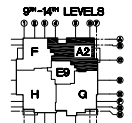
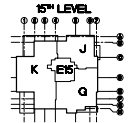
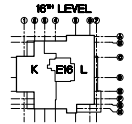


CAD FILE: P:\2004\05\01\NW 12TH & EVERETT\00 Drawings\Arch\CD\Make Png\MARKING DWG\UPR\A2.dwg

Floor plans, renderings, photos, views, and ceiling heights are approximate. Information has been obtained from sources deemed reliable but it is not guaranteed. Buyers shall only rely on information contained within the Unit Sales Agreement. Price quoted is for residential suites completed to builder specifications. Estimated HOA fees include water, sewer, garbage, recycling, interior and exterior maintenance, insurance, concierge, management fees and capital reserves. Price and square footage are subject to change without notice.



WINDOW SIZES AND LOCATIONS VARY PER LEVEL. REFER TO FULL LEVEL PLANS AND ELEVATIONS



THE CASEY

NW 12TH & EVERETT  
PORTLAND, OR 97209

GERDING/EDEN  
DEVELOPMENT  
COMPANY, LLC

REVISIONS  
DATE  
December 8, 2006

PROJECT NUMBER  
**20045000**

SHEET TITLE  
5TH-14TH LEVEL PLAN  
2BR 2BA + DEN  
2,124 - 2,125 SF

SCALE  
1/8"=1'-0" @ 11x17  
1/4"=1'-0" @ 22x34

**A2**

UNIT FLOOR PLAN

\*\*\* GBD ARCHITECTS Incorporated